

**USM Fall 2024 Enrollment Update
&
FY 2025 Estimated Full-Time Equivalent (FTE)
Board of Regents**

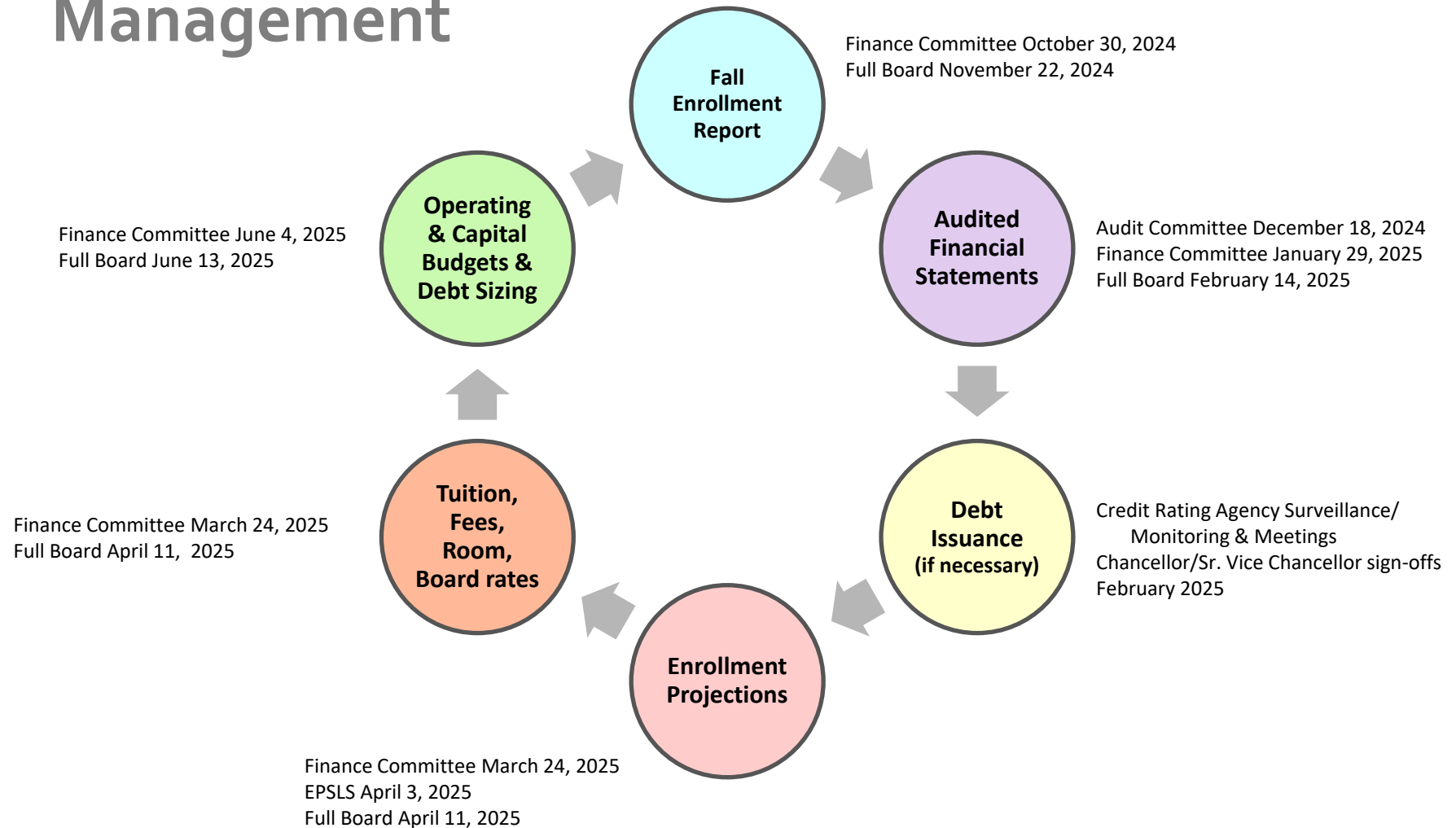


**Decision Support & Strategic Analytics
Administration and Finance**

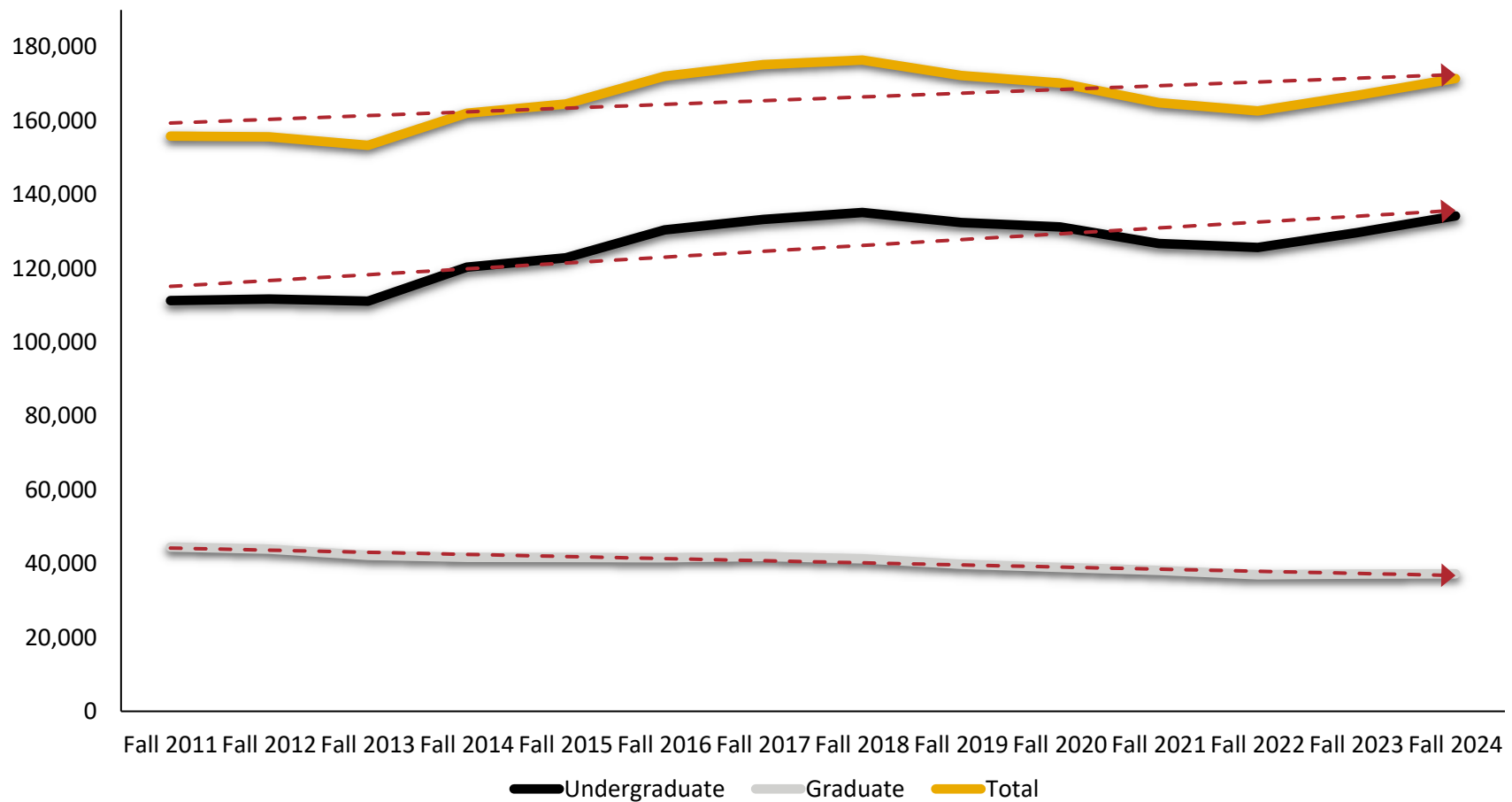
USM Enrollment Update Overview

- Per Board policy, enrollment attainment is compared according to campus enrollment plans approved by the board last spring 2024.
 - Fall 2024 USM enrollment is 171,396--up +2.8% or 4,603 students compared to Fall 2023. Exceeded the USM enrollment projection.
 - Record-setting cohort of first-time, full-time new freshmen—15,478.
- FTE estimate provides a fiscal outlook that is part of the fiscal management cycle.
 - Credit hour Full-Time Equivalent (FTE) Estimate is 131,944 -- 4,130+ FTE more than FY 2024.

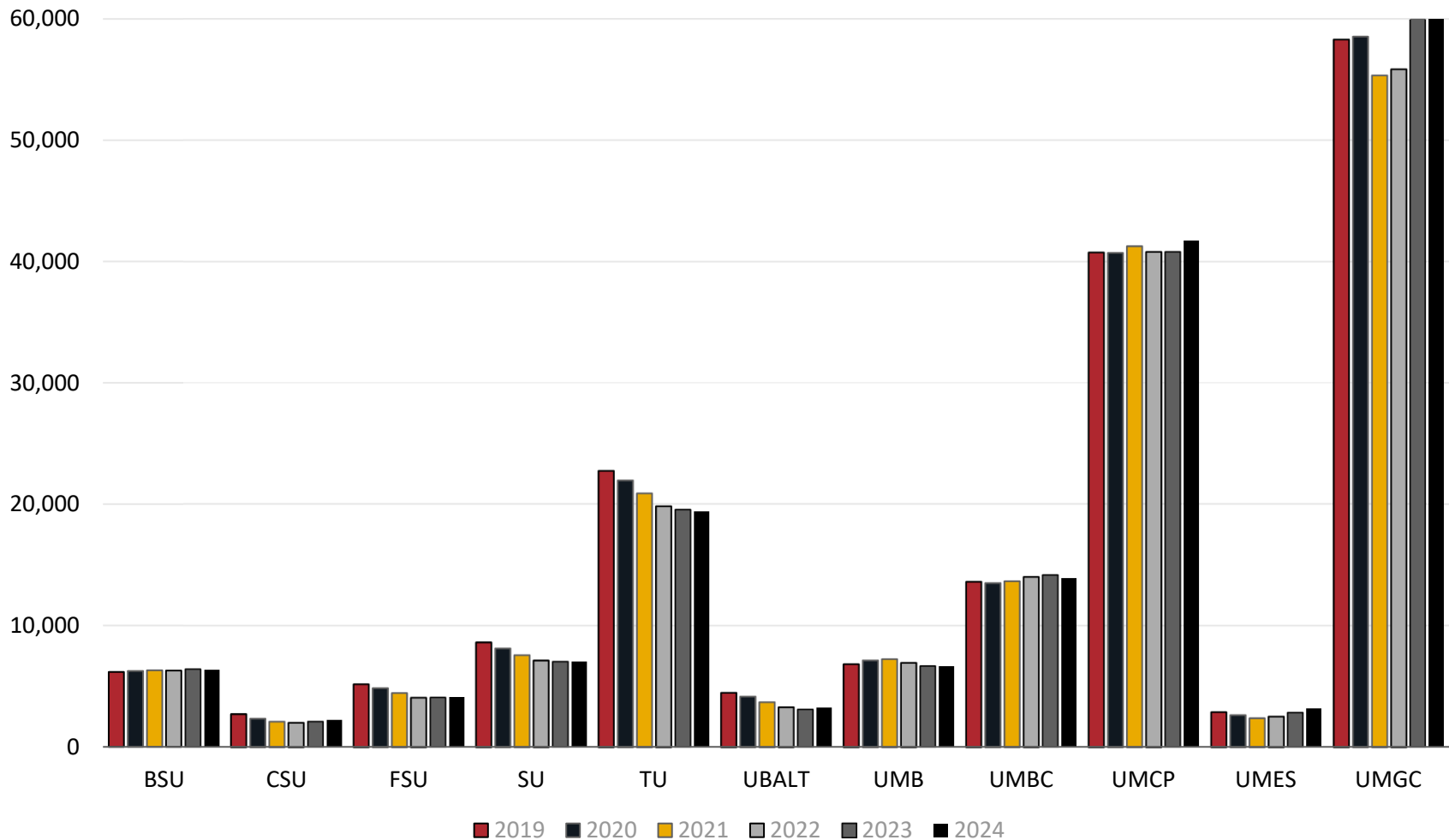
Annual Cycle for Inputs into Financial Management



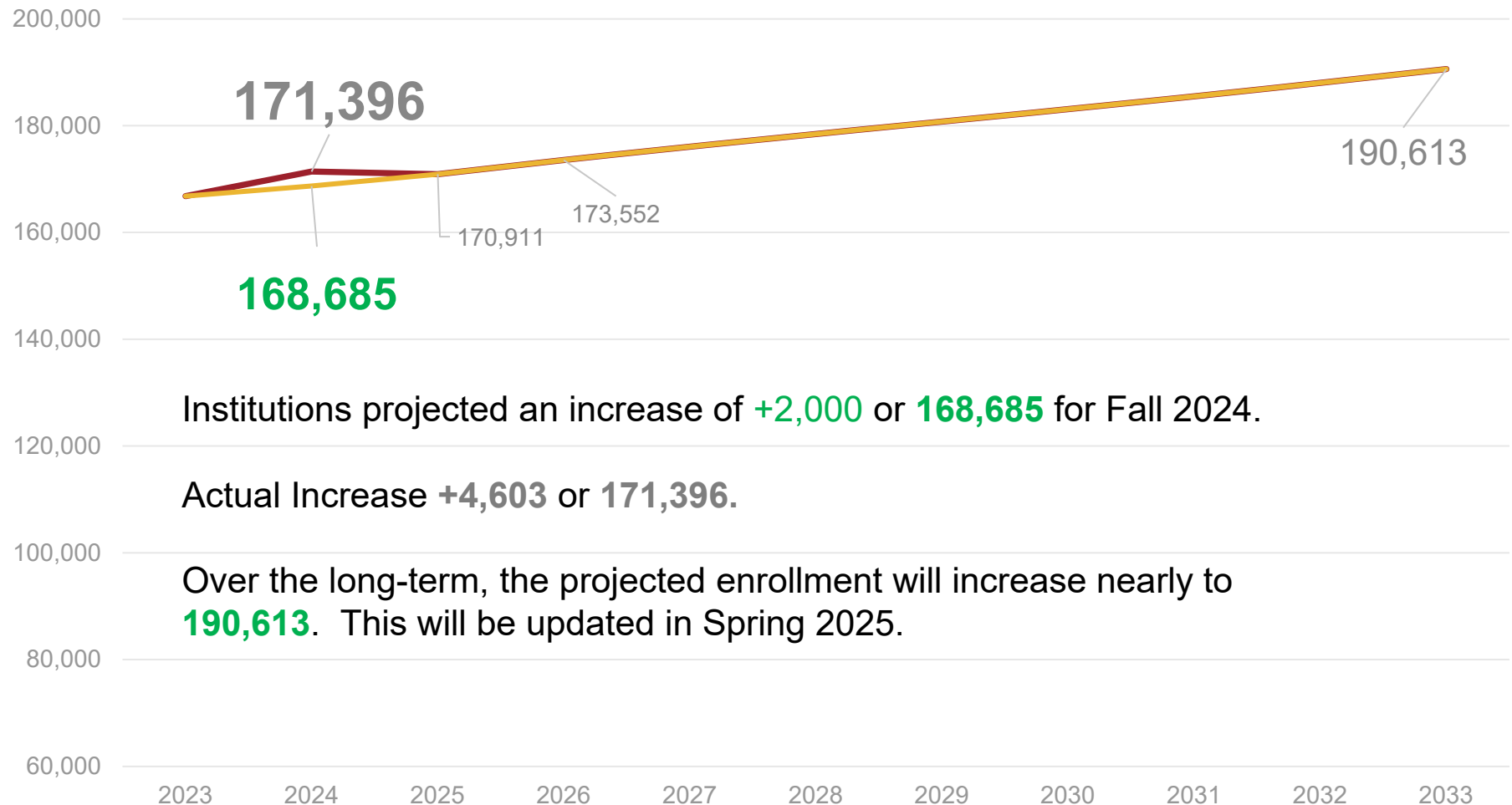
USM Enrollment Trajectory (Fall 2011-2024)



Enrollment Changes by Institution Fall 2019 - Fall 2024



Updated USM Enrollment Projections Fall 2024 Actual VS Projected

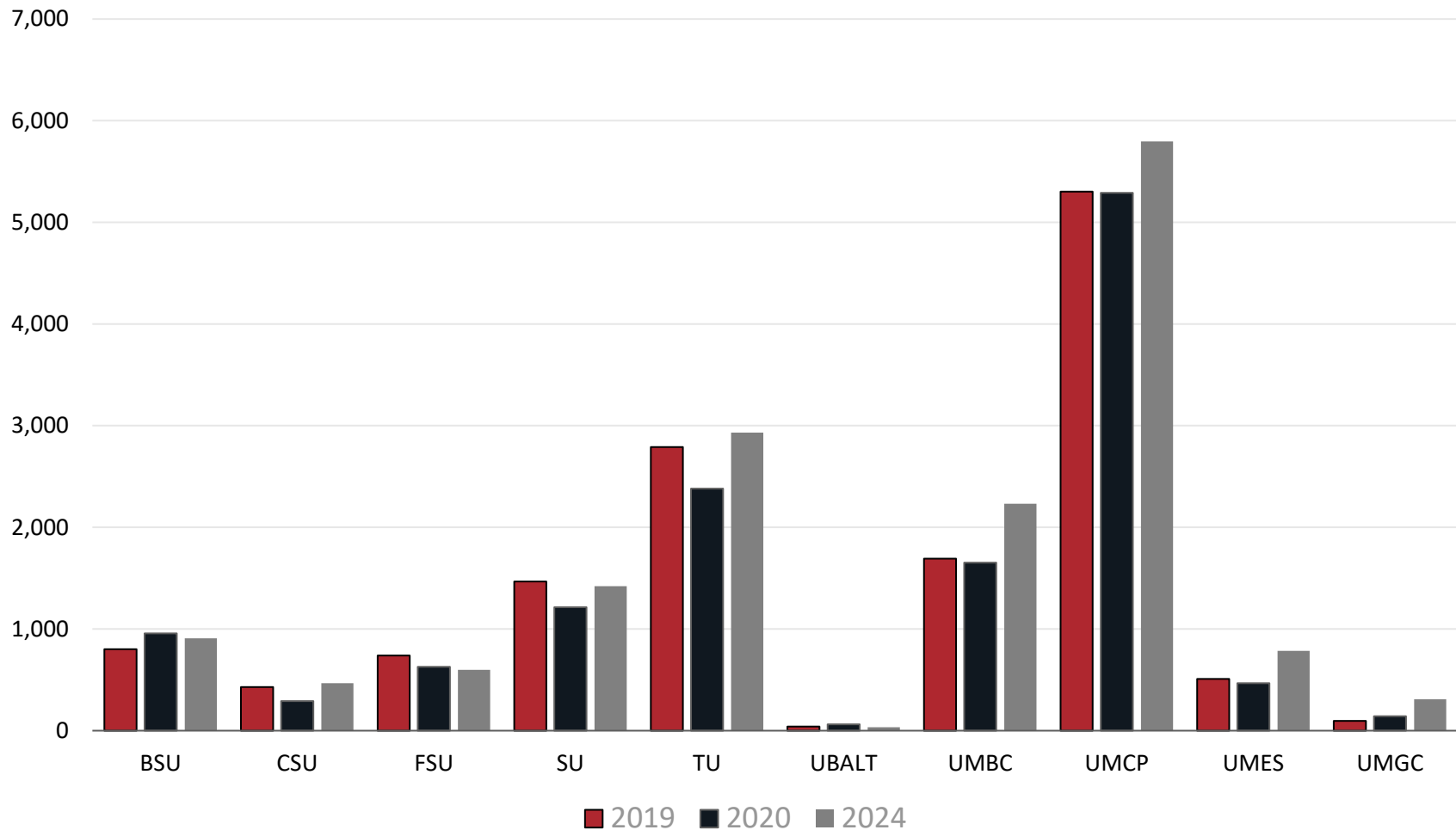


Institutions projected an increase of **+2,000** or **168,685** for Fall 2024.

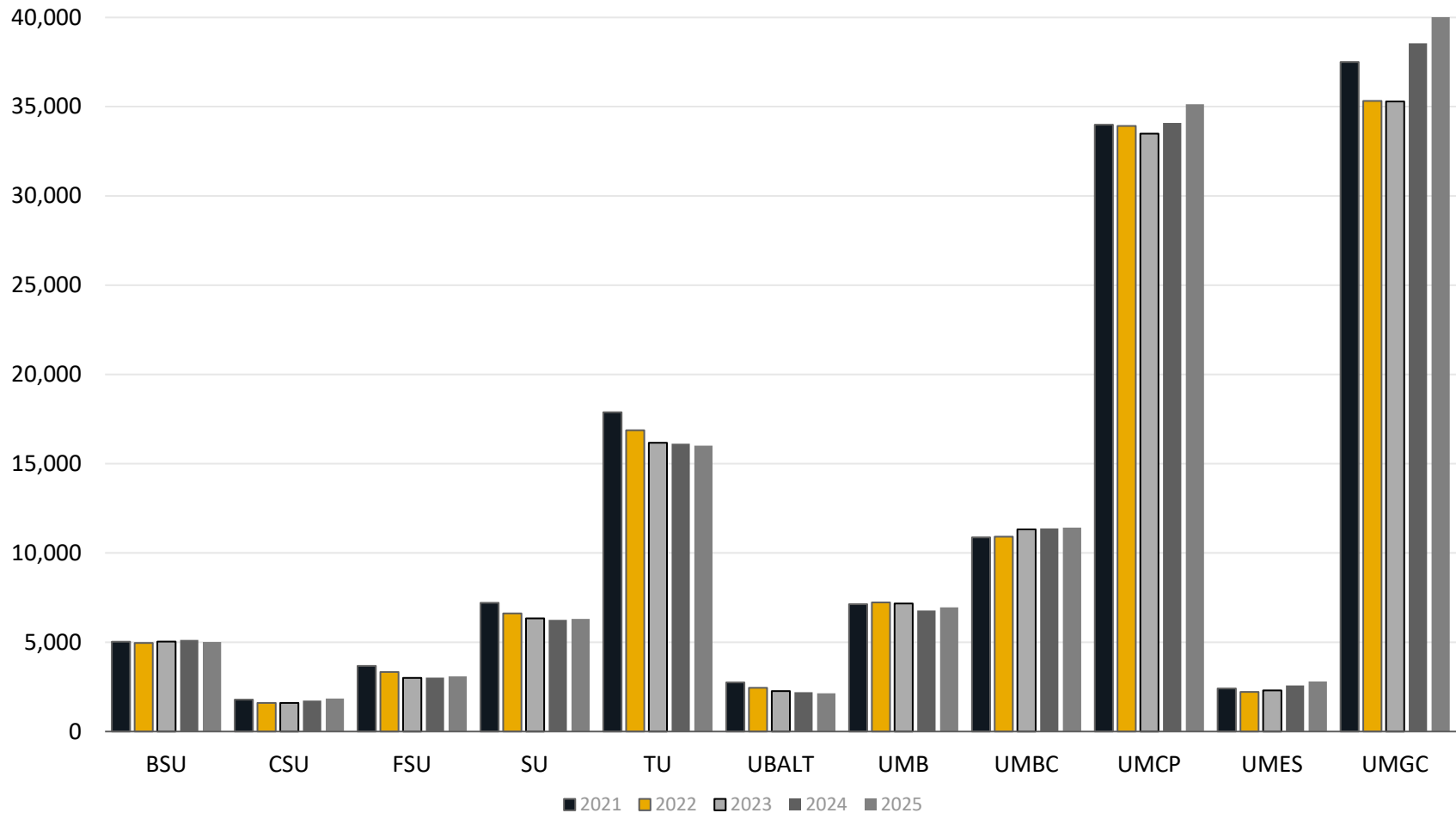
Actual Increase **+4,603** or **171,396**.

Over the long-term, the projected enrollment will increase nearly to **190,613**. This will be updated in Spring 2025.

First-Time, Full-Time New Undergraduates by Institution Pre-Pandemic (2019), Pandemic (2020) and Today (2024)



Fiscal Year Credit Hour Full-Time Equivalent by Institution FY 2021 – FY 2024 Actual & FY 2025 Estimate



National Trends & USM Summary

Nationally (NSC)	University System of Maryland
<p>First-time enrollment <u>declined</u> by 5%.</p> <ul style="list-style-type: none"> Public 4-year universities declined 8.6% Public 2-year colleges declined by 3.1% 	<p>First-time enrollment <u>increased</u> 3.0%.</p> <ul style="list-style-type: none"> 4th year of increases USM HBCU largest cohort since 2008
<p>Total enrollment increased 3.0%.</p> <ul style="list-style-type: none"> UG increased 2.1% GR increased 0.7% 	<p>Total enrollment increased 2.8%:</p> <ul style="list-style-type: none"> UG increased 3.5% GR increased 0.1%
<p>5.9% enrollment increase at US HBCUs</p>	<p>3.3% enrollment increase at USM HBCUs</p>
<p>National full-time and part-time enrollment increases.</p>	<p>USM increased full-time enrollment and expecting higher FTE.</p>

Questions?



Chad Muntz
Chief Analytics & Insight Officer
Office of Administration and Finance
cmuntz@usmd.edu